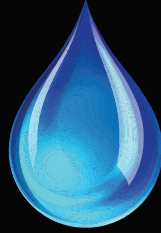
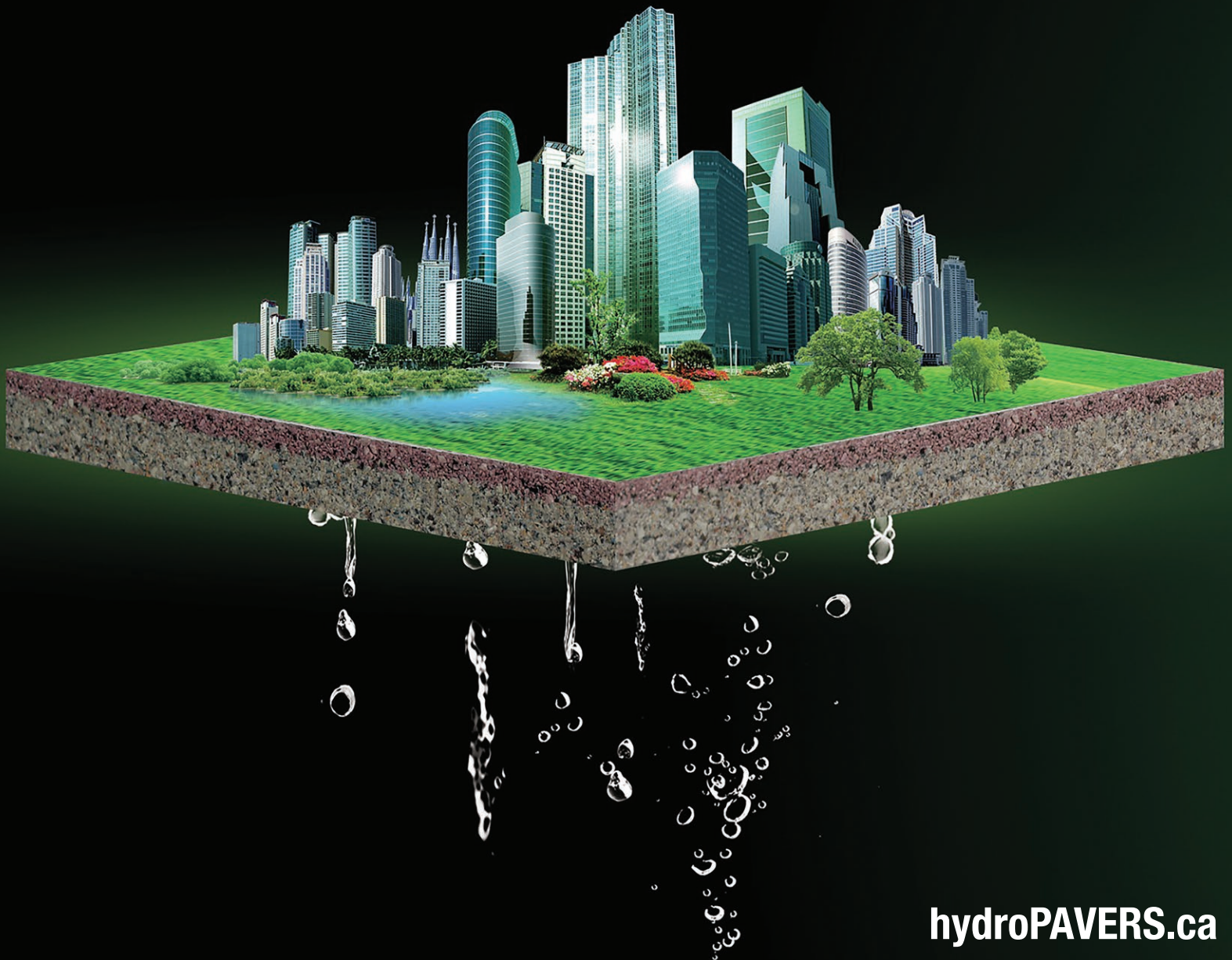
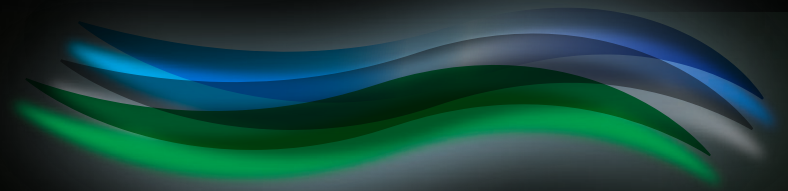


STORM WATER MANAGEMENT SOLUTIONS



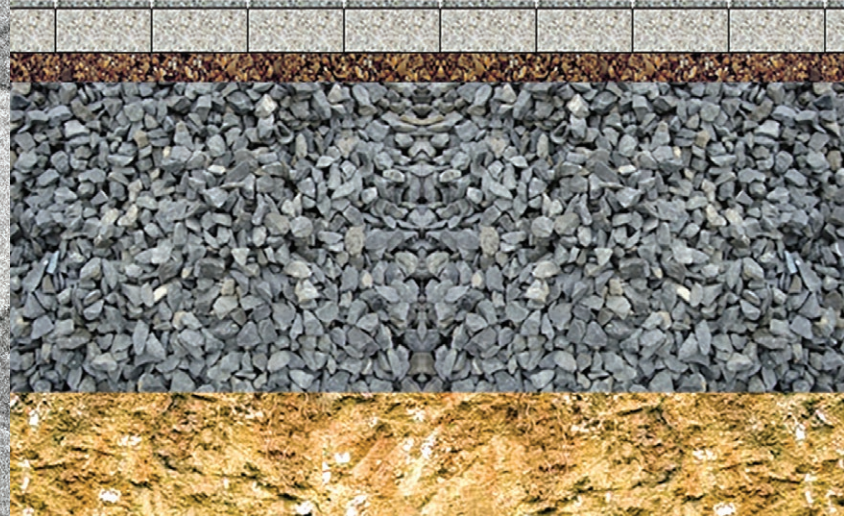
hydro
PAVERS™



hydroPAVERS.ca



hydroPAVERS™ The Ideal Storm Water Solution
Combining Water Retention and Drainage in a Revolutionary Beautiful Paver.



Our **hydroPAVERS™** work by absorbing a 1/4" rain event into the paver, then as the paver becomes saturated, the remaining water drains into the aggregate bedding and base layers, at the rate of 1 1/2" of water per minute.



Our **hydroPAVERS™** are ideal for public parks, amusement parks and virtually any outdoor areas where people walk or park vehicles.



hydroPAVERS™ keep areas dryer even during heavy rains. Once the rain stops, you will be able to resume your activities without waiting for the puddles to disappear.

Using our **hydroPAVERS™** will avoid paths that require you to jump over or walk through puddles. Also eliminate the safety risks with our skid resistant **hydroPAVERS™**



As the water washes over hard surfaces, it can take garbage and pollutants along with it straight into our sewer systems. This puts additional strain on our water treatment plants, and in certain conditions, can lead to flooding.

Our **hydroPAVERS™** are an excellent solution for reducing, filtering and delaying stormwater runoff in applications ranging from walkways, alleyways, parking areas, courtyards and parks. Suitable for all new commercial, municipal and residential projects in addition to replacement, resurfacing and upgrading non pervious areas.

Our **hydroPAVERS™** satisfy Low Impact Development requirements.



NOT Slippery When Wet



hydroPAVERS™ are available in a variety of colours, shapes and sizes, which have been designed to suit all paving, landscaping, construction and design needs.





STORM WATER MANAGEMENT SOLUTIONS

TECHNICAL DATA

TEST CERTIFICATES

Compressive Strength

mean: 9,690 psi // 66.8 MPa

Complies with and satisfies both: CSA A231.2-14 and ASTM C936

H20-The American Association of State Highway Transportation Officials (AASHTO)

Based on these tested results, the hydroPAVERS™ satisfy and exceed the requirements of H20 Standards for heavy vehicles.

Dimensional Checks

In accordance with Section 7.4 of CSA 231.2-14, mean: 55.1mm x 299.7mm x 299.2mm

Density and Absorption

In accordance with CSA A23.2-11C, mean: Absorption % 6.9, SSD Density (kg/m3) 2,034

Infiltration Rate

In accordance to ASTM C1781, average: 2,240 mm/hr (88.2 inches /hr) or (1.47 inches/min)

Freeze/Thaw and De-icing Durability

In accordance with Section 7.3 of CSA A231.2-14. The material loss from the specimens after 49 freeze/thaw cycles was negligible and meets the requirements. Visually, there was no change in the condition of the specimens and the test specimens are in very good condition.

ADA—Americans with Disabilities Act

After reviewing the ADA Standards for ground surfaces, the hydroPAVERS™ meet the ADA requirements.

Water Retention

6L/m2 or 0.15 US Gallons /square foot. The hydroPAVERS™ will absorb a 1/4" rain event.

DAVROC TESTING LABORATORIES FILE: L16-0591MT

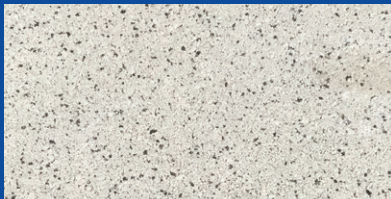
SIZE	PAVER SURFACE AREA	WEIGHT
100mm x 200mm x 55mm / 3.94" x 7.78" x 2.17"	0.215 sq. ft / .02m ²	1.9 kg / 4.2 lbs
200mm x 200mm x 55mm / 7.78" x 7.78" x 2.17"	0.431 sq. ft / .04m ²	3.8 kg / 8.38 lbs
150mm x 300mm x 55mm / 5.91" x 11.81" x 2.17"	0.484 sq. ft / .045m ²	4.6 kg / 10.05 lbs
300mm x 300mm x 55mm / 11.81" x 11.81" x 2.17"	0.969 sq. ft / .09m ²	8.9 kg / 19.62 lbs
300mm x 600mm x 55mm / 11.81" x 23.62" x 2.17"	1.938 sq. ft / .18m ²	19 kg / 39.68 lbs

hydroPAVERS

3700 Salem Road
Pickering, Ontario L1Y 1E8

888 599 6444

hydroPAVERS.ca



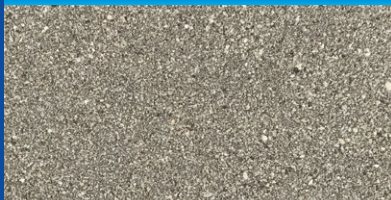
OFF WHITE—000



BROWN—006



YELLOW TACTILE—014



DARK GREY—003



CHARCOAL—004



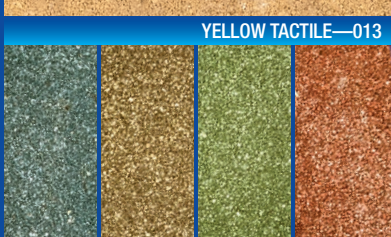
RED—005



SAND—009



YELLOW TACTILE—013



SPECIAL ORDER COLORS